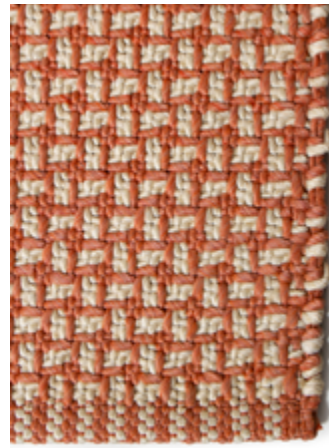
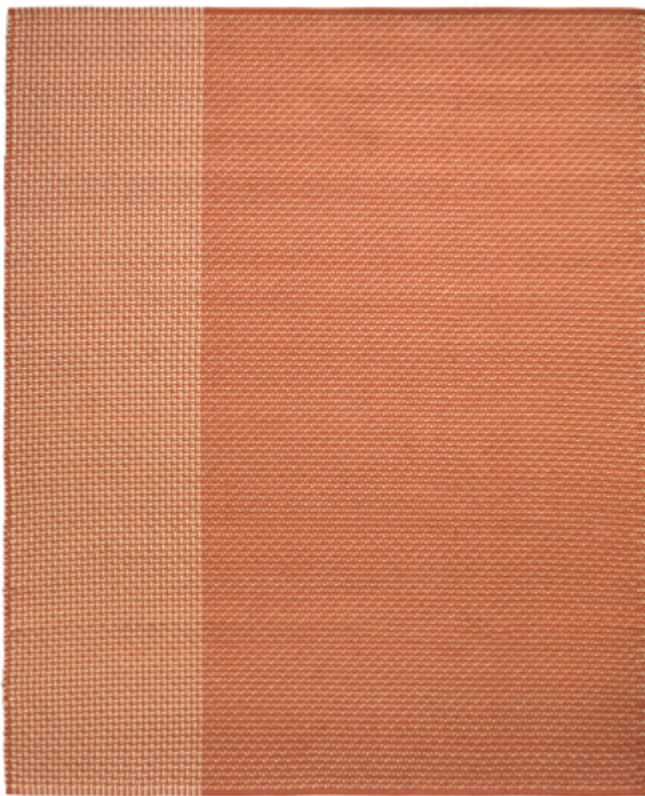


# Palma PL-11

*In & outdoors*



## PL-11

\*Customizable | Personalizable | Personnalisable

Designer | Diseñador | Designer **MY NOW**  
Colors | Colores | Couleurs **5 & 35**  
Pile | Altura | Hauteur **0,47 in / 12 mm**  
Weight | Peso | Poids **8,55 oz/sqft / 2.700 g/m<sup>2</sup>**  
Max. wide | Anchura máxima | Largeur max. **18' / 5,5 m**  
Polypropylene | Polipropileno | Polypropylène

**6'x9' | 200x300cm**  
**8'x10' | 250x300 cm**  
**9'x12' | 275x360 cm**

## CERTIFICATES

- It will pass through flammability test 16CFR-1630 (FF1-70).
- It will pass through UVR transmission test AATCC183-210.
- It will pass through Mildew resistance properties test. AATCC 174-20017 AATCC 30.
- It will pass through colour fastness test, colour staining - in the level of 4/4.5.
- Colour fastness to dry and wet crocking - 4.
- Colour fastness to light AATCC 16.3 after 300 Hours - 4.

[www.nowcarpets.com](http://www.nowcarpets.com)

NOW CARPETS USA INC

174 FIFTH AVENUE, SUITE 503  
NEW YORK, NY 10010 (USA)  
TEL: +1 646 583 2949  
[usa@nowcarpets.com](mailto:usa@nowcarpets.com)

NOW CARPETS USA INC

2727 PONCE DE LEÓN BVLVD  
CORAL GABLES, FL 33134(USA)  
TEL: +1 646 583 2949  
[usa@nowcarpets.com](mailto:usa@nowcarpets.com)

NOW CARPETS S.C.

Pº INDEPENDENCIA 8 DUP. 2º  
50004 ZARAGOZA (SPAIN)  
TEL: +34 976 46 36 45  
[now@nowcarpets.com](mailto:now@nowcarpets.com)

NOW CARPETS MIDDLE EAST

G-058, TECHNO HUB 1, SILICON OASIS,  
DUBAI, UNITED ARAB EMIRATES  
T: +971 4 339 8019  
[info@nowcarpets.ae](mailto:info@nowcarpets.ae)